

1 2 3 4 5 6 7 8

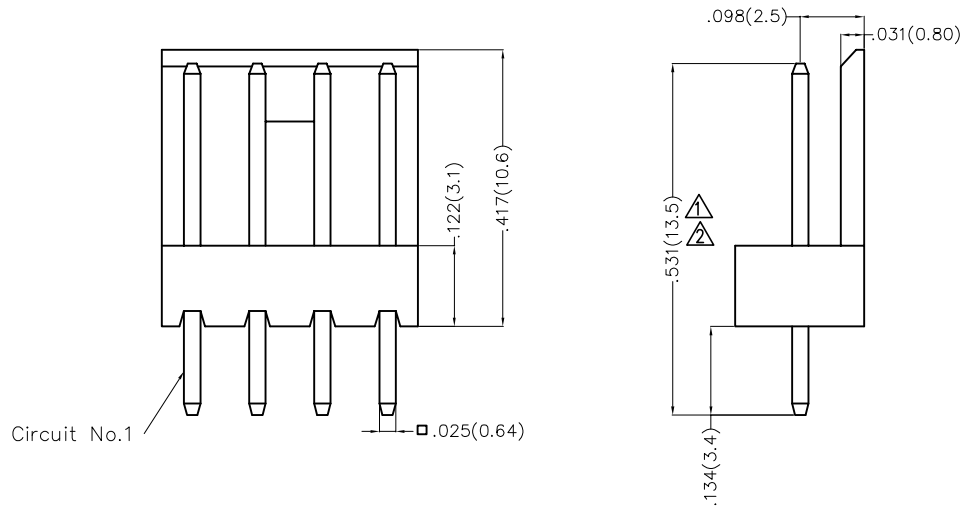
REV	LOCATIONS	DESCRIPTION	DATE	REVISER	APPD
1		1: Corrected the Structural 2: Size changes	10/MAR/22	MATT	KATE
2		Size changes	20/MAY/24	MATT	LEO

**Electrical**

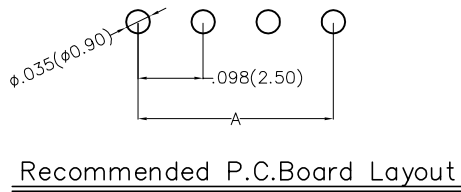
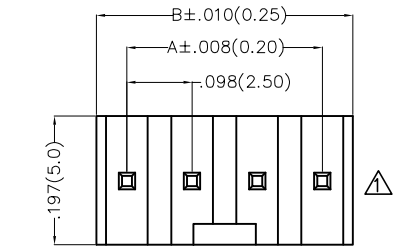
Current Rating: 3.0A AC(rms)/DC  
 Voltage Rating: 250V AC(rms)/DC  
 Contact Resistance: 20 mΩ Max  
 Insulation Resistance: 1000 MΩ MIN  
 Withstanding Voltage: 1000V AC r.m.s  
 Temperature Range—Operating: -25°C~+85°C

**Material and Plating**

Housing: PA66( UL 94V-0)  
 Contact Pin: Brass  
 Plating: Tin Plated  
 Mates With(Housing): FHG25005 Series



Circuits (n)	Part No.	Dimensions(in/mm)	
		A	B
2	FWF25009-S02S22W1B	.098(2.50)	.197(5.00)
3	FWF25009-S03S22W1B	.197(5.00)	.295(7.50)
4	FWF25009-S04S22W1B	.295(7.50)	.394(10.00)
5	FWF25009-S05S22W1B	.394(10.00)	.492(12.50)
6	FWF25009-S06S22W1B	.492(12.50)	.591(15.00)
7	FWF25009-S07S22W1B	.591(15.00)	.689(17.50)
8	FWF25009-S08S22W1B	.689(17.50)	.787(20.00)
9	FWF25009-S09S22W1B	.787(20.00)	.886(22.50)
10	FWF25009-S10S22W1B	.886(22.50)	.984(25.00)
12	FWF25009-S12S22W1B	1.083(27.50)	1.181(30.00)



**Ordering Information**

FWF 250 09 — S XX S 2 2 W1 B  
 1 2 3 4 5 6 7 8 9 10

1   Category FWF—Wafer	2   Series Number 250—Pitch2.5mm	3   Distinction No. 09	4   Row Option S—Single Row	5   Circuits XX	6   Entry Angle S—180° Vertical
7   Plating 2—Tin Plated	8   Material—Resin 2—PA66	9   Color—Resin W1—White	10   Packaging B—PE Bag		

 THIRD ANGLE PROJECTION	GENERAL TOLERANCES (UNLESS SPECIFIED)		APPROVE BY FRANK	DATE 01/JUL/13	PART NO. FWF25009-SXXS22W1B	ITEM NO. FWF25009	 Building Technology Cornerstone
	DESIGN UNITS Inch (metric)	X.±.012(0.30) X.X±.008(0.20)	X:±5° .X'±2'	CHECKED BY JACOB	DATE 01/JUL/13	TITLE Wire to Board (Wafer) Pitch 2.5mm 180° Vertical (DIP)	
SCALE 5:1	SIZE A4	X.XX±.006(0.15) X.XXX±.004(0.10)	.XX'±1° .XXX'±0.5°	DRAWN BY CHERRY	DATE 01/JUL/13	THIS DRAWING CONTAINS INFORMATION THAT IS PROPRIETARY TO TXGA INDUSTRIAL ELECTRONICS(S.Z)CO.,LTD AND SHOULD NOT BE USED WITHOUT WRITTEN PERMISSION	

1 2 3 4 5 6 7 8